

**KBE**

OF NORTH AMERICA

1 Washington Street

Room # 12

P.O. Box 76

Ellicottville, NY 14731-0076

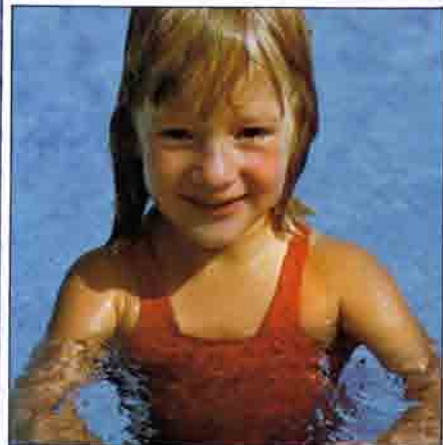
(716) 699-2868 - Phone & Fax

Penne Thomas

KBE Sales Representative

**Movable  
swimming pool  
floor systems**

**WASSER**



Heidi - can swim thanks  
to the KBE Movable  
Swimming Pool Floor

and

KBE COMPANY OF NORTH  
AMERICA

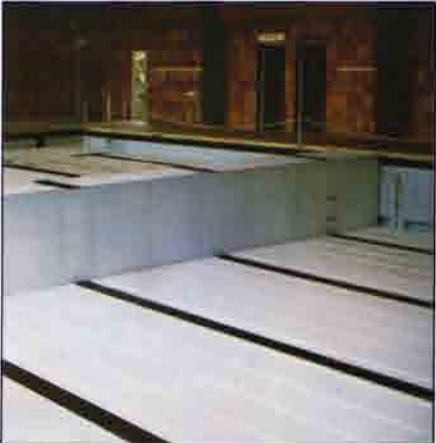
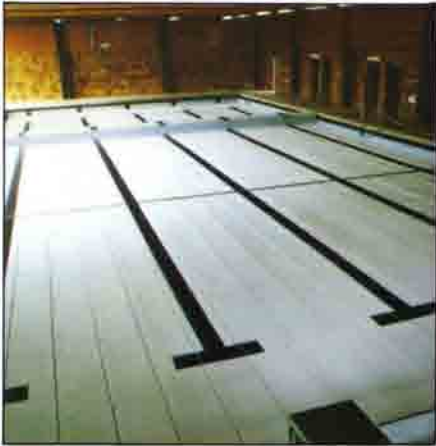
**KBE**  
Bauelemente

# KBE Company of North America Movable Swimming Pool Floors

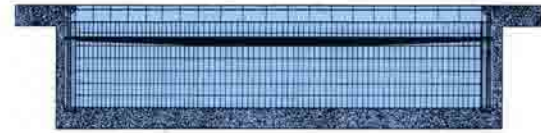
• Safe • Convenient •  
Maintenance Free •

Fixed depth swimming pools are a thing of the past. Now by the turn of a key you can safely alter the depth of your swimming pool from deck level to full depth in a matter of minutes.

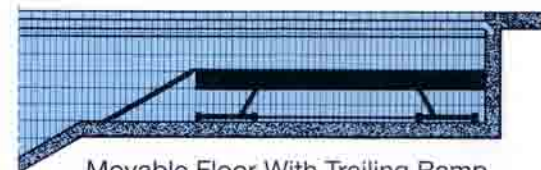
This concept answers a real need in the communities. Small children to senior citizens can have the water depth at a level that lets them feel comfortable in the water.



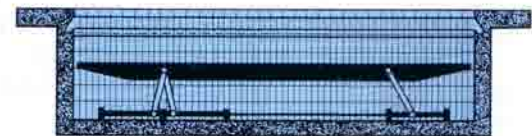
Stainless Steel Scissor Jacks



Screw Jack Movable Floor



Movable Floor With Trailing Ramp



Entire pool with movable floor



**KBE**  
Baelemente

The KBE Movable Floor allows easy entrance to the swimming pool for small children, senior citizens, as well the physically disabled.

## History of the Movable Swimming Pool Floor

The Movable Swimming Pool Floor concept originated in Germany some 30 years ago. The first movable floor in North America was built in the Olean, New York YMCA in 1975. Now well over 100 movable swimming pool floors dot across North America, mainly in rehab centers & hospitals, colleges & universities, YMCAs, YWCAs & YMHAs, public & private schools, boys & girls clubs, and yes even in private homes.



- Access Ramps
- Parallel Bars
- Shower Chairs
- Econo-Pool Lifts
- Swim Gem
- Aqua Play
- Fence Sections

## Stainless Steel Adjustable Parallel Bars:

The parallel bars are available in two sizes 6' and 11'. They are free standing and adjustable and are designed to be used in or out of the swimming pool. The parallel bars are made of high-quality stainless steel and are designed to stand up in chemically treated water.



## THERAPY POOL

With the great emphasis on providing for the physically disabled, the KBE Therapy Pool with the movable floor is a must. Any water depth just by the push of a button. The floor travels 6" per minute. Not only does the movable floor eliminate lifting the disabled but more importantly gives much dignity to the disabled swimmer.

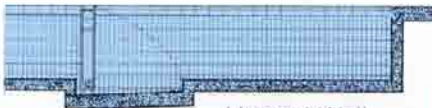


## Hinged Wall/ Lifting Wall

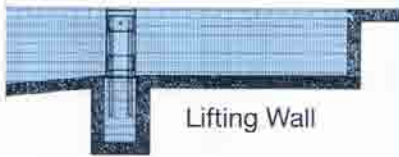
The KBE Hinged or Lifting Wall gives added dimensions to your swimming pool. The wall, in minutes, turns the swimming pool into two pools giving the aquatic personnel greater flexibility.

## Motor & Driving Mechanism

KBE provides a first rate motor and driving mechanism. The motor and driving mechanism are housed in a dry area for ease in installation and maintenance.



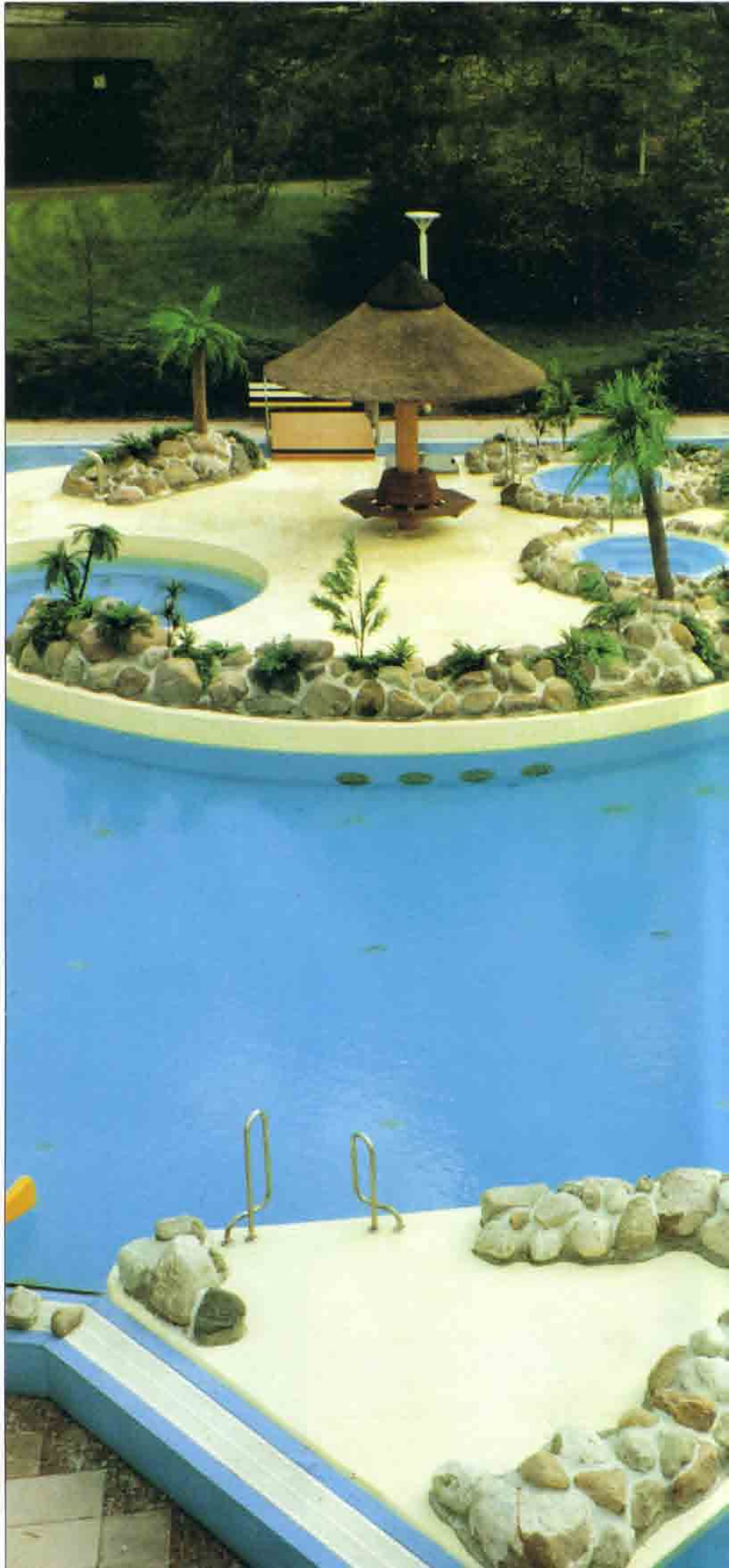
Hinged Wall

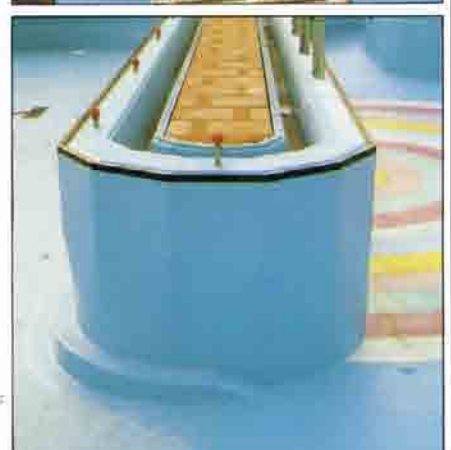


Lifting Wall

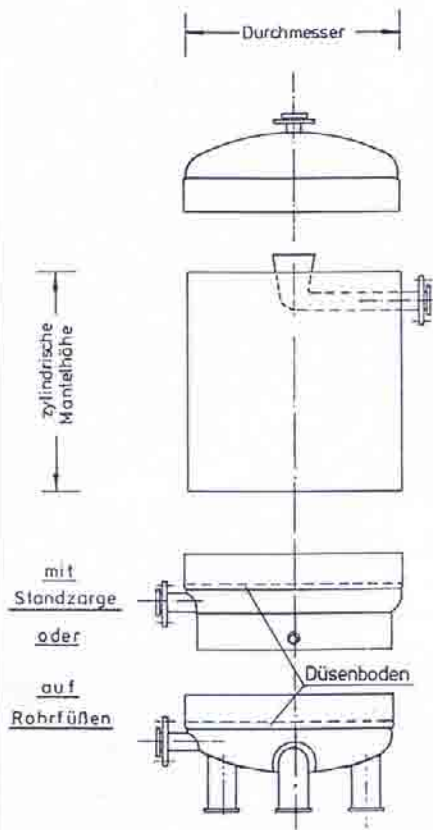


Motor & Driving mechanism





**KBE**  
Bauelemente



## Maintenance Customer Service



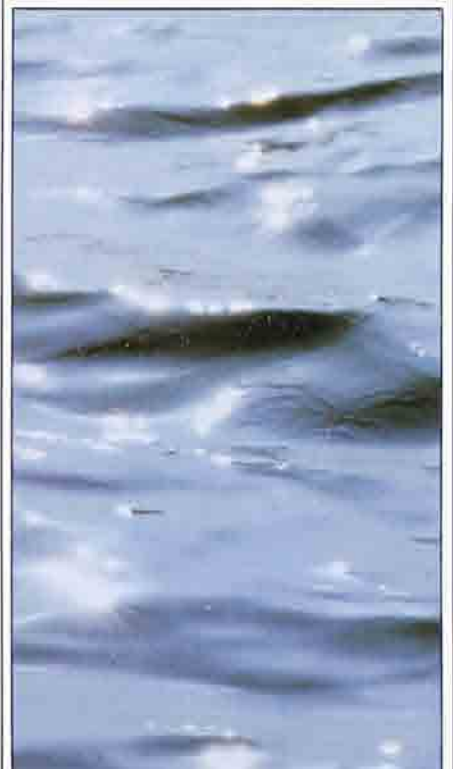
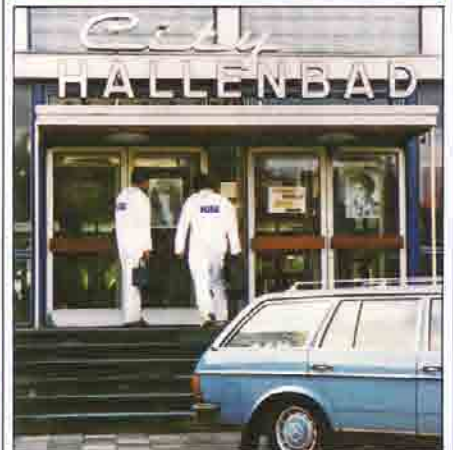
Highly Trained

KBE Company of North America maintains a well trained service department. One day per year a service representative visits the swimming pool and prepares the movable floor for another year of maintenance free operation.

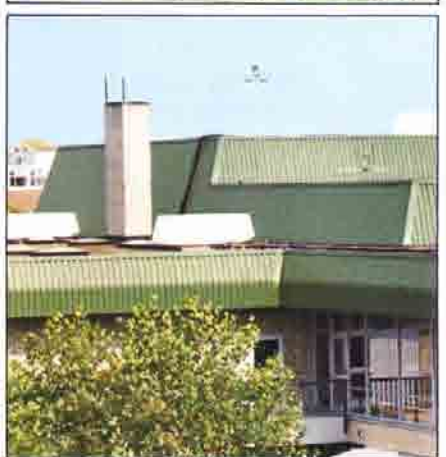


Service Oriented

In that the scissor jacks are made of high-quality stainless steel and the planking of re-inforced polyester, both materials are proven to stand up in chemically treated water, very little maintenance is required.







## Maintenance Customer Service



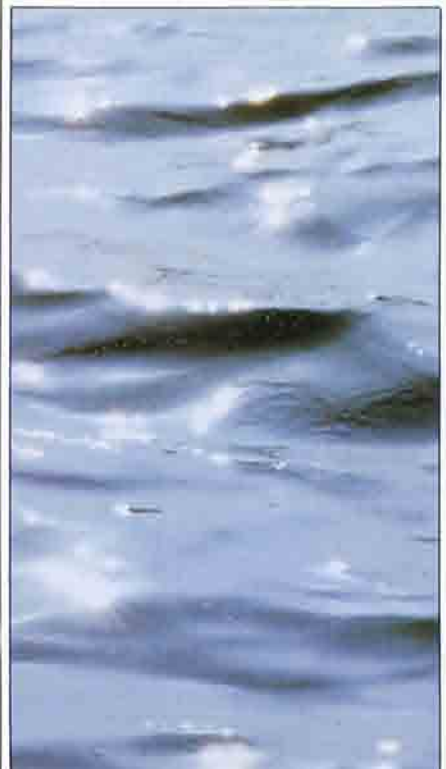
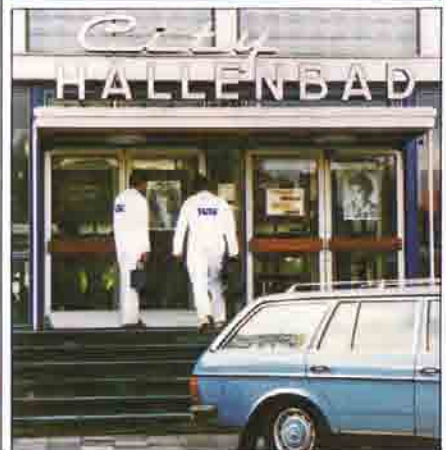
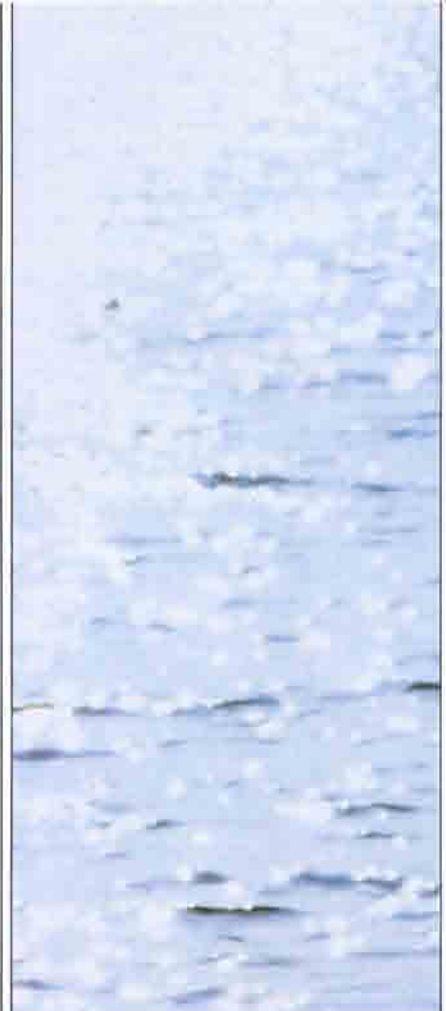
Highly Trained

KBE Company of North America maintains a well trained service department. One day per year a service representative visits the swimming pool and prepares the movable floor for another year of maintenance free operation.



Service Oriented

In that the scissor jacks are made of high-quality stainless steel and the planking of re-inforced polyester, both materials are proven to stand up in chemically treated water, very little maintenance is required.





KBE  
OF NORTH AMERICA  
1 Washington Street  
Room # 12  
P.O. Box 76  
Ellicottville, NY 14731-0076  
(716) 699-2868 - Phone & Fax

**KBE-Bauelemente** GmbH & Co. KG  
An der Junkerei 1 - 3  
26389 Wilhelmshaven  
Telefon (0 44 21) 75 01-0  
Fax (0 44 21) 75 01-39

**KBE**  
Bauelemente