

The Super Power EZ Lift is a modified version of our very popular Power EZ Lift™ to be used on above ground backyard swimming pools. The Super Power EZ Lift was specifically designed to clear walls 10 inches thick and up to 58 inches high with push button ease, making it perfect for your above ground backyard pool or spa. All stainless steel construction with the same durable powder coating provided on all of our other lift models, the Super Power EZ was built for years of trouble free use.

FEATURES

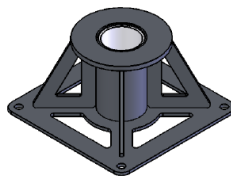
- **400lb** (181kg) lifting capacity
- Clears walls 10" thick by 58" high (25x147cm)
- Set back Range: 22" to 24" (56-61cm)
- Battery operated lifting actuator
- Rechargeable 24v battery with charging station
- Removable manual rotation bar
- Adjustable stainless steel sling chains
- Durable and adjustable mesh sling
- Five year limited structural warranty
- Five year pro-rated electronics warranty
- One year warranty on sling

OPTIONS

- **Hard Seat** Item #F-0320HSO
- **Extra Large Sling** Item #F-037EZLS
- **Surface mount anchor** Item #F-88HBSM
- **Cover** Item #F-440EZC
- **Upgrade Kit** Item #F-03EZPLAP

SPECIFICATIONS

- **Mast:** 2 1/2" Schedule 40 type 304 Stainless Steel with external reinforcing fin
- **Boom:** 2 1/2" Schedule 40 type 304 Stainless Steel with external reinforcing fin
- **Removable Rotation Bar:** 1" OD solid 304 Stainless steel
- **Sling Hanger Bar:** 304 Stainless steel
- **Actuator:** Linak LA-34 Linear actuator
- **Battery:** Linak 24VDC Rechargeable
- **Sling:** 20"W by 38"L (51x96.5cm) 100% polyester mesh rated for patient lifting devices
- **Extra Large Sling:** 28"W by 50"L (71x127cm) 100% polyester mesh rated for patient lifting devices
- **Chain:** Stainless Steel
- **Finish:** UV Resistant epoxy powder



Optional Surface Mount
Anchor System



Hard Seat Option

View more at www.aquacreek.com

PROUDLY SOLD BY: